



AIBI
Higher Education



COURSE GUIDE

aibi.edu.au
CRICOS Code: 03844J
TEQSA: PRV14316

EDUCATION FOR ALL



CONTENTS

Welcome	4
Experience Australia	6
Cost of Living in Australia	7
Bachelor of Cyber Security	8
Bachelor of Enterprise Management Systems	10
Bachelor of Business	12
Working in Australia	14
Reasons to Study with AIBI	16
How to Apply	18

Welcome to AIBI Higher Education

The Australian Institute of Business Intelligence offers industry-relevant higher education courses. We have a student-centred approach with smaller class sizes taught by experienced academics.

Outside the classroom, students have opportunities to apply their business knowledge in client-based projects and participate in industry networking events and internships.

We believe the future of work is intelligence - artificial and human - in a borderless global marketplace. Our vision is to prepare students for opportunities of the future by focusing on tomorrow's business intelligence needs.

Apply for admission to AIBI HE today at: aibi.edu.au/how-to-apply/

PROUD MEMBERS OF



CAMPUS LOCATIONS

SYDNEY

Our Sydney campus is proud to acknowledge that we are located on the traditional lands of the Gadigal people of the Eora Nation. Less than a 5-minute walk from Central Station, our Sydney campus couldn't be easier to get to.

MELBOURNE

Our Melbourne campus is privileged to stand on the traditional lands of the Wurundjeri people of the Kulin Nation. Stop off for a coffee as you stroll from Melbourne's Central Station to our campus, located just 4-minutes apart.

BRISBANE

Our Brisbane campus is grateful to be set on the traditional lands of the Turrbal and Jagera peoples. You'll find our Brisbane campus in Slacks Creek, just a 20-minute bus or car from the city centre!

PERTH

Our Perth campus is honoured to reside on the traditional lands of the Whadjuk Noongar people. Soak in the sun and enjoy your lunch at Herdsman Lake, a couple of minutes walk from our Perth campus.

ONLINE

We understand that studying from one of our campuses isn't always possible. That's why we offer live online study classes, giving you the freedom to learn from anywhere in Australia.

EXPERIENCE AUSTRALIA

It's time to experience all that Australia has to offer, from stunning beaches to the rugged outback. Take the time to immerse yourself in a land of indigenous history, modern vibrant cities, and wildlife like nowhere else in the world.

Try out some surfing, hiking, and snorkelling or simply soak up the sunshine while enjoying a day at the beach or local park.

With a world-renowned education system and so much to do, by studying in Australia you will make memories that will last a lifetime. Australia is home to many exciting cities. It is renowned world-over for its beautiful beaches, cultural diversity, and relaxed lifestyle.

Here's 5 reasons to study in Australia



QUALITY EDUCATION

Australian universities are respected globally for providing a high standard of education. At AIBI, you'll learn from leading academics with real-world experience.



MULTICULTURALISM

A diverse melting pot of cultures, studying in Australia offers you the opportunity to get to know people of many different backgrounds. You'll be able to explore different cultures, including trying different languages and foods.



WORK AND INTERNSHIP EXPERIENCES

As well as offering world-class education, Australia also offers a variety of opportunities for work and internships. AIBI can assist you with finding an internship. Australia also offers a Temporary Graduate Visa (subclass 485) that allows some international students to stay in Australia and continue to work after they have graduated.



THE GREAT OUTDOORS

Australia is home to a wide variety of landscapes, from coastal ecosystems to gumtree forests and deserts. Many Australian cities have national parks at their doorstep.



VIBRANT CITIES

Australia's major cities are beautiful and exciting. From stunning suburban beaches and amazing coffee shops to leading restaurants and bars, Australia's cities are a buzzing hub of culture.

COST OF LIVING IN AUSTRALIA

Australia is renowned for being a great place to live and study, however, some students may find the cost of living to be higher than what they are used to. The cost of living includes expenses for things such as accommodation, transportation, food, and entertainment.

While these costs will vary depending on your lifestyle, budgeting and planning ahead of time can help you to manage them effectively.

For example, choosing to house share instead of renting an apartment on your own will help you to save a lot of money. Rest assured that you can enjoy everything Australia has to offer, without breaking the bank, as long as you plan ahead.

[Calculate your cost of living here.](#)



Flinders Street Station, Melbourne - VIC



Delivery Mode
On Campus

Duration
Full time: 2 years (Option to study over 3 years if preferred)

Intakes
March, June, September

CRICOS Code: 112840F
TEQSA: CRS1401441

[Find more information on our tuition fees here.](#)

Bachelor of Cyber Security

The Bachelor of Cyber Security offered by AIBI Higher Education is a technical course designed to prepare students for entry-level roles leading to an exciting career in Cyber Security. Students will first learn the foundations of information technology, such as programming, networks and databases, before tackling more specialised subjects, such as those in applied cryptography and network, web and cloud security. This leads to advanced cyber security subjects, such as those focused on ethical hacking, cyber-physical systems, IoT security and cyber security operations.

Students will also be exposed to highly useful subjects focusing on soft skills and human factors. For example, these subjects can cover communications, cybercrime, cyberlaw and cyberethics, cyber governance risk and compliance as well as project management.

Graduates will have the necessary skills and knowledge to work in a wide range of industries, primarily in a cyber security analyst role.

Students entering this course are required to have access to a personal computer, preferably a laptop with the following specifications:

- Minimum: 8th Gen Intel Core i5 or equivalent, 8GB of RAM and 256GB of storage.
- Recommended: 9th Gen Intel Core i7 or equivalent, 16GB of RAM and 512GB of storage.

Entry Requirements

Age at Time of Course Commencement:

- Domestic Students; 17 or older
- International Students; 18 or older

Education:

- Domestic: ATAR 60 minimum (or equivalent)
- International: Year 12 Completion (or equivalent).

Requirements differ per country.

English:

- IELTS: 6.0 overall (no band less than 5.5, or equivalent)
- PTE: 52 overall (no band less than 50, or equivalent)

Career Pathways for New Graduates

- Entry-level Cybersecurity Analyst
- Entry-level Information Security Analyst
- Entry-level Security Consultant
- Entry-level Penetration Tester
- Entry-level Digital Forensics Analyst

Course Subjects

Year 1 (Level 100)

CYB101 Introduction to Cyber Security

BUS105 Communications

BUS110 Quantitative Methods for Business

ICT125 Programming Fundamentals

ICT130 Networking Essentials

ICT140 Systems and Database Design

Elective 1

Elective 2

Year 2 (Level 200)

CYB210 Applied Cryptography

BUS201 Data Analytics

CYB225 Secure Coding

CYB230 Network and Web Security

CYB235 Cloud Security

CYB250 Cybercrime, Cyberlaw and Cyberethics

Elective 1

Elective 2

Year 3 (Level 300)

CYB310 Digital Investigations and Forensics

CYB340 Cyber Physical Systems and IoT Security

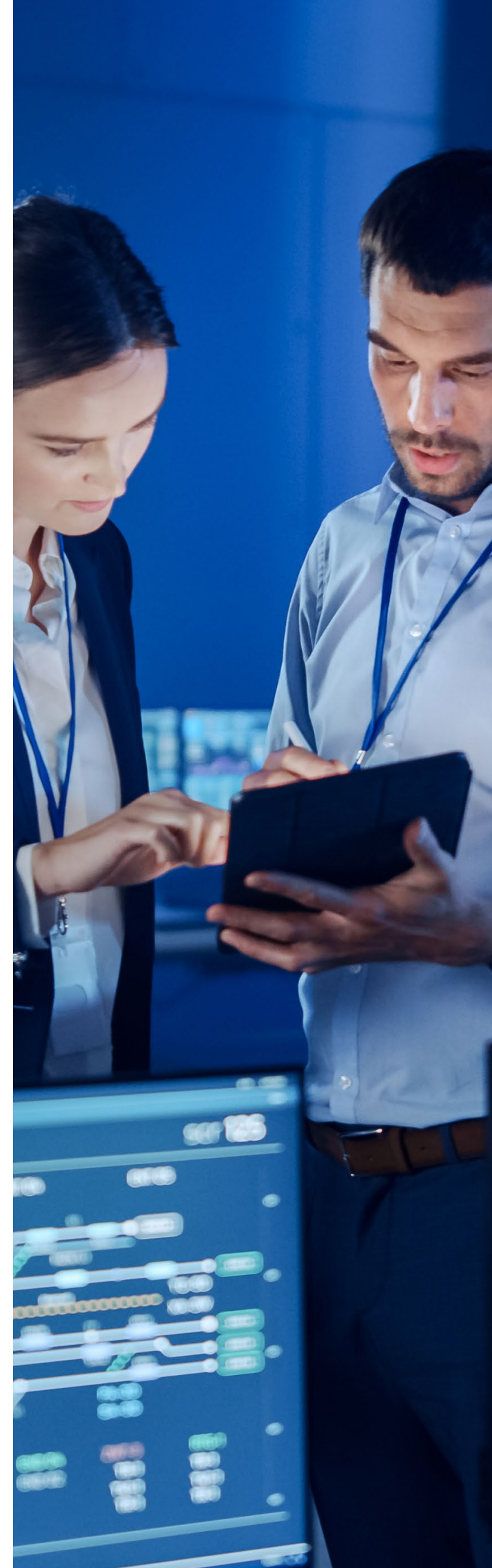
CYB345 Penetration Testing

CYB350 Cyber Security Operations

CYB355 Cybergovernance Risk and Compliance

CYB358 Project Management

CYB360 Capstone Project





Delivery Mode
On Campus

Duration
Full time: 2 years (Option to study over 3 years if preferred)

Intakes
March, June, September

CRICOS Code: 0102179
TEQSA: CRS1400674

[Find more information on our tuition fees here.](#)

Bachelor of Enterprise Management Systems

The Bachelor of Enterprise Management Systems is a degree that encompasses the skills and knowledge to succeed in the current market. The course focuses on the challenges associated with selecting, installing, and maintaining systems that support business processes, data analytics and information flows. This includes both systems within an organisation and those that relate to key external parties, such as suppliers and customers. Skills and knowledge in Enterprise Management Systems are sought after by a diverse range of employers. By studying this degree, graduates will be equipped to work in many different sectors and industries.

Students will use contemporary industry-standard enterprise systems software. They will also have opportunities to interact with the industry through guest lecturers, industry visits and case studies.

The Bachelor of Enterprise Management Systems is taught by experienced academics and industry professionals. Students of this degree can enjoy small class sizes and a blended learning approach.

Entry Requirements

Age at Time of Course Commencement:

- Domestic Students; 17 or older
- International Students; 18 or older

Education:

- Domestic: ATAR 60 minimum (or equivalent)
- International: Year 12 Completion (or equivalent).

Requirements differ per country.

English:

- IELTS: 6.0 overall (no band less than 5.5, or equivalent)
- PTE: 52 overall (no band less than 50, or equivalent)

Career Pathways for New Graduates

- Systems Analyst/Support
- ICT Business Analyst
- Analyst Management
- Consultant Software Engineer
- ICT Quality Assurance Engineer
- Data Management
- Project Coordinator/Administrator

Course Subjects

Year 1 (Level 100)

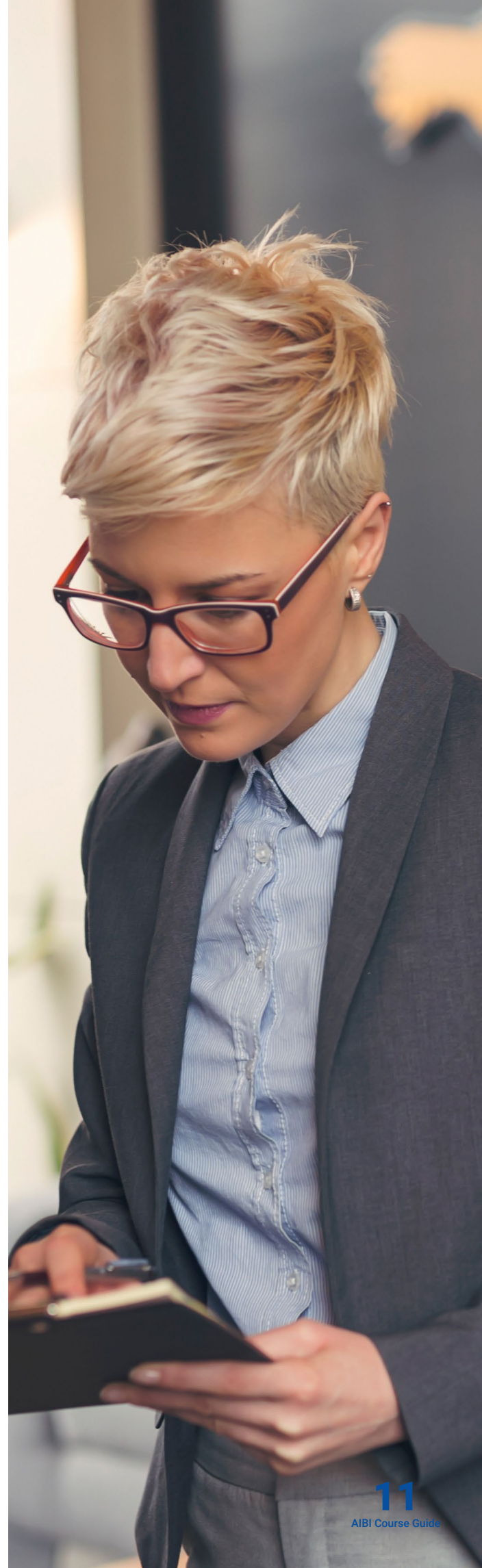
- BUS101 Business Information Systems
- BUS102 Introduction to Enterprise Management Systems
- BUS110 Quantitative Methods for Business
- ICT140 Database and Systems Design
- MGT101 Operations and Logistics Management
- Elective 1
- Elective 2
- Elective 3

Year 2 (Level 200)


- BUS201 Data Analytics
- BUS204 Accounting Systems
- MGT203 Production and Service Delivery Systems
- MGT204 Inventory and Asset Management Systems
- Elective 1
- Elective 2
- Elective 3
- Elective 4


Year 3 (Level 300)


- BUS302 Sales and Logistics Systems
- BUS304 Procurement Managements Systems
- MGT301 Global Supply Chain Management
- MGT302 Extended Enterprise Management Systems
- MGT304 Human Capital Management Systems
- CAP301 Capstone Project
- Elective 1






 Delivery Mode
On Campus

 Duration
Full time: 2 years (Option to study over 3 years if preferred)

 Intakes
March, June, September

 CRICOS Code: 0102178
TEQSA: CRS1400675

[Find more information on our tuition fees here.](#)

Bachelor of Business

The Bachelor of Business is a multidisciplinary course for students who wish to establish a career in business.

Students will learn about the special challenges associated with conducting business across national borders, diverse and different cultures, and different legal and regulatory environments. Students will be taught the fundamentals of business and learn how to make strategic management decisions.

Graduates will be equipped with the necessary knowledge to lead a team in diverse professional environments. Graduates will have the necessary skills and knowledge to work in a wide range of industries, including private and government sectors or possibly create their own international business.

AIBI Higher Education provides a blended learning approach, offering small classes that encourage active participation. Students will be able to apply their knowledge to real-life scenarios and projects taught by experienced academics and industry professionals.

Entry Requirements

Age at Time of Course Commencement:

- Domestic Students; 17 or older
- International Students; 18 or older

Education:

- Domestic: ATAR 60 minimum (or equivalent)
- International: Year 12 Completion (or equivalent).

Requirements differ per country.

English:

- IELTS: 6.0 overall (no band less than 5.5, or equivalent)
- PTE: 52 overall (no band less than 50, or equivalent)

Career Pathways for New Graduates

- Import/Export Specialist
- International Trade Coordinator
- Foreign Affairs Officer
- International Business Consultant
- International Relations Manager
- International Business Development Manager
- Global Account Manager
- International Human Resource Manager
- Project Coordinator/Administrator

Course Subjects

Year 1 (Level 100)

BUS100 Accounting for Business

BUS101 Business Information Systems

BUS103 Introduction to International Business

BUS104 Business Marketing

BUS110 Quantitative Methods for Business

Elective 1

Elective 2

Elective 3

Year 2 (Level 200)

BUS201 Data Analytics

MGT202 International Strategic Management

MGT205 Entrepreneurship and Innovation

MGT208 Organisational Behaviour and Change Management

Elective 1

Elective 2

Elective 3

Elective 4

Year 3 (Level 300)

BUS301 Business Strategy

BUS303 International Marketing

MGT301 Global Supply Chain Management

MGT303 Business Leadership in a Global Context

MGT305 Sustainability in Business

CAP301 Capstone Project

Elective 1



WORKING IN AUSTRALIA WHILE YOU STUDY

Working while you study in Australia can help complement your study and living experience. There are a number of reasons why you might want to undertake part-time work while studying in Australia, including assisting with living expenses and gaining work experience in your field.

As of 1 July 2023, international students can work up to 48 hours per fortnight while their course is in session and unrestricted hours during any scheduled course break. Keep in mind that before you undertake any paid work, it is strongly advised that you review and check your student visa requirements.

UNDERTAKING INTERNSHIPS

Internships can be paid or unpaid. They can be a great way to get exposure to the professional industries within Australia. AIBI Higher Education tries to connect students with relevant employers and industries.

FINDING PAID WORK

Australia has a wide range of industries. Many have part-time employment opportunities including:

- Retail: Supermarkets, department and clothing stores
- Hospitality: Cafes, bars and restaurants
- Tourism: Hotels and motels
- Agricultural: Farming and fruit-picking
- Sales and telemarketing: Administration or clerical roles
- Tutoring

If you have existing qualifications and/or professional work experience, you may be able to secure casual or part-time work in your field. Before undertaking any paid work, individuals need to ensure that their visa permits part-time work.



AIBI Sydney Campus

REASONS TO STUDY WITH AIBI HE



LEARN FROM EXPERIENCED ACADEMICS

At AIBI Higher Education, you'll learn from professors and lecturers who are qualified academics. Our academic staff also hold a wealth of industry experience, meaning you'll learn how to apply theory to the real world.



CONVENIENTLY LOCATED CAMPUSES

Our campuses are conveniently located in Sydney, Melbourne, Brisbane, and Perth. Whether you're Australian-born or an international student studying here, you'll have the opportunity to explore Australia's most vibrant, multicultural cities.



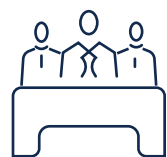
OPEN THE DOOR TO NEW OPPORTUNITIES

Studying a degree with AIBI HE can open the door to exciting career opportunities. Many of our students opt to undertake part-time work in their chosen fields during their studies.



BE SUPPORTED IN YOUR STUDIES

AIBI HE provides a supportive learning environment and you'll be supported to reach your academic goals throughout your studies. Our team can also help you with internships and job opportunities.



GAIN EXPOSURE TO THE REAL WORLD OF BUSINESS

At AIBI HE, you'll have opportunities to go beyond theory and understand how business works in the real world. You'll undertake authentic assessments based on clients and case studies. Plus, as an AIBI HE student, you'll gain access to networking opportunities with industry groups and professionals.

BE SUPPORTED

When you choose to enrol at AIBI Higher Education, you're choosing to study in a supportive environment. AIBI HE encourages an open and nurturing environment that empowers students to learn and further themselves.

AIBI HE supports the wellbeing, safety and mental health of its staff and students. We adopt proactive and student-centric approaches to ensure student wellbeing.

Your mental health is important to us. At AIBI HE we're committed to:

- Creating an inclusive, diverse and supportive culture
- Delivering wellbeing initiatives
- Promoting mental wellbeing
- Raising awareness of mental health
- Reducing the social stigma surrounding mental health.

We recognise that starting a university degree can be an enormously exciting period of your life. We also recognise it can be one that comes with a number of pressures, from balancing your studies to settling into a new city or country.

At AIBI HE, we're here to help support you through this period of change. We offer courses that encourage holistic wellbeing, such as emotional, physical, social, mental and spiritual wellbeing.

You can visit our Student Support team on campus or email studentsupport@aibihe.edu.au.



HOW TO APPLY

Application for admission into an AIBI Higher Education course is simple and can be completed online via our website.

STEP 1 READY TO APPLY?



You can submit your application online on the AIBI HE website or via your agent.

[Start your application](#)

STEP 2 PREPARING YOUR SUPPORTING DOCUMENTS



When applying, you can submit your supporting documents. This can include:

- Academic Transcript
- Diploma / Certification of Completion
- CV
- A copy of your passport

All evidence and documentation needs to be in English and needs to be authentic. For more information on demonstrating authenticity, refer to the How to Apply page on the AIBI HE website: aibi.edu.au/how-to-apply/

STEP 3 MEETING ACADEMIC REQUIREMENTS

Before applying, check you meet the academic requirements of the degree you wish to study.

A NOTE ON ENGLISH REQUIREMENTS

Students whose first language is not English will need to provide evidence of English language proficiency. For more information on English requirements, refer to the How to Apply page on the AIBI HE website: aibi.edu.au/how-to-apply/

WHAT HAPPENS AFTER YOU APPLY?

✓ RECEIVE YOUR OFFER LETTER

AIBI Higher Education's admissions team will check you meet the relevant requirements and have provided the required documents. If you meet all the criteria, you'll be sent a letter of offer.

✓ PAY THE INITIAL DEPOSIT

AIBI HE will be in touch with details of what payments need to be made in order to confirm your enrolment.

✓ RECEIVE YOUR COE

This is your Confirmation of Enrolment.

✓ LODGE YOUR VISA

If you are an international student, you can apply for your visa once you have received your Confirmation of Enrolment. If you are a domestic student you can proceed straight away to the next step.

✓ ATTEND YOUR ORIENTATION WEEK

At Orientation Week, you'll get to meet some of your professors and fellow students. You'll also get to tour AIBI HE's campus. During Orientation Week, AIBI HE will provide you with access to our online learning platform and provide you with other important information.

For more information about enrolment, entry requirements, or any other aspect of AIBI HE, get in touch with us.

1300 23 77 41

info@aibi.edu.au

aibi.edu.au

Level 5 / 451 Pitt St, Sydney NSW 2000

Level 5 / 440 Elizabeth St, Melbourne VIC 3000

L74 Walters Drive, Osborne Park, WA 6017

3431 Pacific Hwy, Slacks Creek QLD 4127



www.aibi.edu.au 

Australian Institute of Business Intelligence



CRICOS Code: 03844J - TEQSA: PRV14316

Disclaimer: The information in this brochure is correct as of July 2024. AIBI Higher Education reserves the right to alter any matter described in this brochure without notice. Readers are responsible for verifying information that pertains to them by contacting The Australian Institute of Business Intelligence.